

www.bourne.e-sussex.sch.uk

ISSUE 15

Attendance Hotline

A reminder that you need to use our Attendance Hotline telephone number if you need to report your child's absence from school if they are unwell.

The number is **(01323) 746337**

Please call this number between 8.00 and 9.00am on the day that your child is going to be absent, and we will ask for your child's name, class and the reason that they are absent.

Please do not use the main school number to report absences. Thank you.

EAL Parents' Coffee Morning

Do you speak a different language at home? Please come to our coffee morning, which will take place on Friday, 27th January, from 8.45-9.20am in the Community Meeting Room.

- Tea/coffee available
- Meet other parents, ask questions



We would like to discuss:

- How you can help your child with reading

P.E. in the National Curriculum

We would like to remind you that P.E. is an important part of the National Curriculum, and we are keen that all pupils participate in both P.E. lessons each week. Each child therefore needs to have an indoor and outdoor P.E. kit in school and we suggest that it could be washed during the half term and main holidays as this is only worn for a maximum of two hours a week.

Please also be aware that guidance on safe practice in P.E. indicates that tights should not be worn in P.E. lessons. If the children are outside, their jogging bottoms will keep them warm, and if they are inside, the hall and gym are heated. All lessons which use P.E. apparatus are done in bare feet, as are many dance lessons. We therefore ask the children to remove their tights for P.E. lessons.

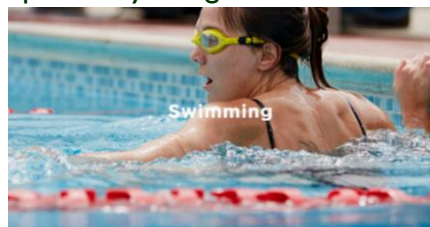
If your child has to wear trainers for outdoor PE or to run the school mile, and you are worried that their feet will be uncomfortable without tights, please provide a separate pair of named socks which can remain in their PE kit bag with the rest of their kit.

www.facebook.com/bourneprimaryschool

FRIDAY 20th JANUARY 2017

'This Girl Can' Swimming Sessions

The Sovereign Centre have teamed up with Sport England to provide ladies only swimming sessions in our pools, specifically designed with women in mind.



- Are you a woman of any age?
- Would you like to do some exercise, but you haven't had the chance recently?
- Do you feel self-conscious about wearing swimwear in public?
- Are you put off by male 'sporty' environments?
- Do you have a lot of priorities in your life, and need sport and exercise to fit in with them?

Then our 'This Girl Can' swimming sessions may be the perfect solution for you!

Swimming is one of the most effective full body exercises and a sociable way to keep fit, so grab your costume and your friends and join other like-minded women in the pool at the Sovereign Centre:

- Wednesdays from 14:45 - 15:45 (£2)
- Thursdays from 18:15 - 19:15 (£2)

You can book your place at the website www.eastbourneleisurecentres.com/sovereign_centre/ThisGirlCan . Alternatively you can book at reception inside the centre, or by calling 08452 671200.

Rewarding Good Attendance and Punctuality



In Fang's family Kangaroos had the best attendance this week, while Giraffes were the most punctual class.



Zebras were the best attenders in Miss Lilac's family, and Hawks were the most punctual class.



Well done to all four classes!

House Points

Gryphon	116	points
Unicorn	107	points
Centaur	101	points
Phoenix	96	points
Minotaur	92	points
Dragon	91	points

Well done **Gryphon!**

Diary Dates

- Foxes Class Assembly
Tuesday 24th January at 9.00am
- Coffee morning for EAL parents
Friday 27th January at 8.45am
- Hedgehogs Class Assembly
Tuesday 7th February at 9.00am
- Healthy Eating Workshops for Years 5 and 6
Wednesday 8th February
- Half term holiday – school closed
Monday 13th – Friday 17th February

A Request from the Early Years

The children love modelling, and have been creating fantastic things out of 'junk' – egg boxes, cereal packets etc. If you can help us by giving us your unwanted cardboard (cereal packets, kitchen towel rolls, empty boxes) and plastic (fruit or vegetable boxes, plastic drinks bottles, etc), we would be very grateful.

Please make sure anything which has been in contact with food is clean and empty, and if it is plastic, please wash it first. There is a myth that schools cannot use toilet roll centres or egg cartons – this is nonsense, as long as they are clean!



Junk modelling not only helps develop the children's creativity, it also helps their fine motor skills



Job Opportunity at the School – Please Spread the Word!

We are looking to appoint a Midday Supervisor, to work from 12noon to 1.30pm, 5 days per week (7.5 hours per week). This job involves supervising the children throughout the lunch period, in the playground, dining hall or classrooms. Experience of working in schools in a similar role would be an advantage, and we are looking for a team worker who will help keep lunchtimes enjoyable and safe for the children.

A job description, pay details and application form are available from the school office. The closing date for the role is Friday 3rd February.

Bourne Primary School is committed to safeguarding and promoting the welfare of children and young people. All appointments are subject to a satisfactory enhanced safeguarding check.

FOBSA

The FOBSA Annual General Meeting is on Thursday 26th January at 2.00pm. Everyone is welcome. We are keen to be joined by someone with secretarial skills.

If it Snows

If it snows, we do everything we can to stay open. We only close the school on snow days for two reasons:

- If it would be dangerous for the children to attend school
- If too many members of staff (many of whom live far away or in places which do not have gritted roads) cannot travel because of the snow, which would mean that we couldn't offer adequate supervision.

If we do decide to close, we will let you know by text and email – please make sure we have your up-to-date contact details. If you are signed up and do not hear from us, please assume we are open.

Working with our Local Community

We have had a polite request from one of our neighbours: Please do not park in the private car park of Rush Court, as spaces are allocated to, and paid for by, residents. The car park is not for our use. Thank you.